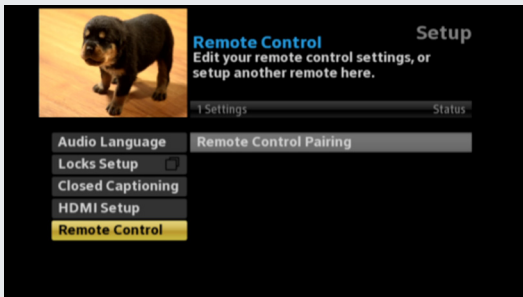
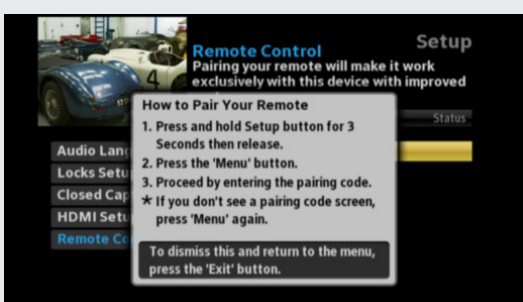


LED Light

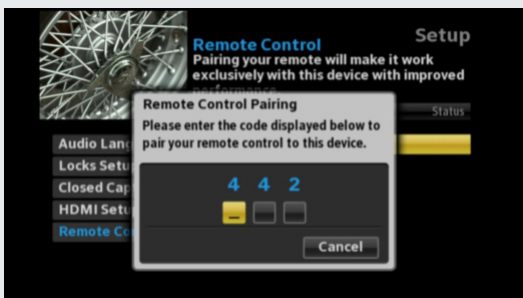
REMOTE PAIRING



1. Press the **Menu** button.
2. Select Remote Control and then select **Remote Control Pairing**.



3. Press and hold **Setup** button until the LED Indicator turns green.
4. Press the **Menu** button. Please allow a few seconds for the menu to display



5. Proceed by entering the pairing code displayed in blue on the pairing code pop-up screen.

Note: If you don't see a pairing code screen, repeat steps 1 and 2.

TO REMOVE REMOTE CONTROL PAIRING (FORCE UN-PAIR)

If you would like to use your remote control for a different set-top box, you must first un-pair the remote control from the current device. Follow the steps below to remove the pairing.

- 1 Press and hold the Setup button for three seconds until the LED Indicator turns green.
- 2 Enter 9-8-7 on the remote control.
- 3 The LED Indicator will blink green twice.

TO RESET THE TV IR CODE

- 1 Press and hold the Setup button for three seconds until the LED Indicator turns green.
- 2 Enter 9-8-6 on the remote control.
- 3 The LED Indicator will blink green twice.

TO FACTORY RESET THE REMOTE CONTROL UNIT

- 1 Press and hold the Setup button for three seconds until the LED Indicator turns green.
- 2 Enter 9-8-1 on the remote control.
- 3 The LED Indicator will blink green twice.

RF Input

RF Output

Channel 3/4 Switch

HDMI to TV

DC Power Supply

REMOTE FUNCTIONS



LED BLINK PATTERNS

LED Behavior	HD uDTA Status	Troubleshoot
Red Green Red Green 	Device is looking for signal The HD uDTA is in Hunt Mode	Check RF connections
Green Green Red 	Device in Pending Initialization Mode (has QAM lock, acquired CAT and waiting for an activation)	Check device ID, send refresh
Green Green Green 	Device in Code Download Mode (code download pending)	Wait for device to complete download
Solid Green 	Device is in normal operations, decoding video	No action required
Blinking Green Light 	Device in Trouble Mode	Power cycle & check connections to verify device is not working